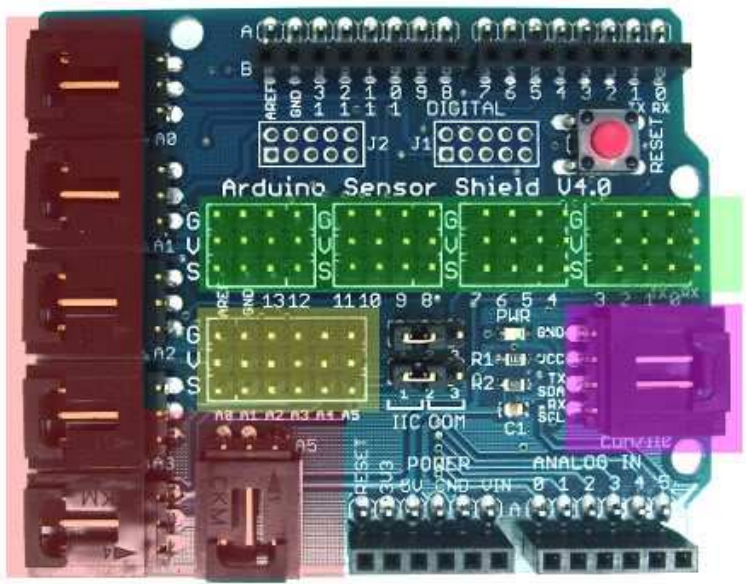


Build Arduino projects just as easy as piling bricks!!

Arduino Sensor Shield V4.0 allows you to connect to various modules like sensors, servos, relays, buttons, potentiometers.....just plug & play.

Each functional module has buckled port with VCC, GND and Output, which has corresponding port on the Sensor Shield, connected with a plain 2.54mm dual-female cable you may start playing already. Buckled brick cables are like cement for bricks, make the connections easier, secure and more professional looking.



 **Buckled Analog Port**

- Handy, solid connection to 6 Analog inputs with VCC/GND

 **Digital IO port**

- 13 ports prepared to digital modules or servos
- G V S : Ground, VCC, Signal

 **Analog IO Port**

- 2.54 grid male pin header connections
- G V S : Ground, VCC, Signal

 **Buckled Communication Port**

- Selectable between I2C and COM
- Using IIC COM to select I2C or COM